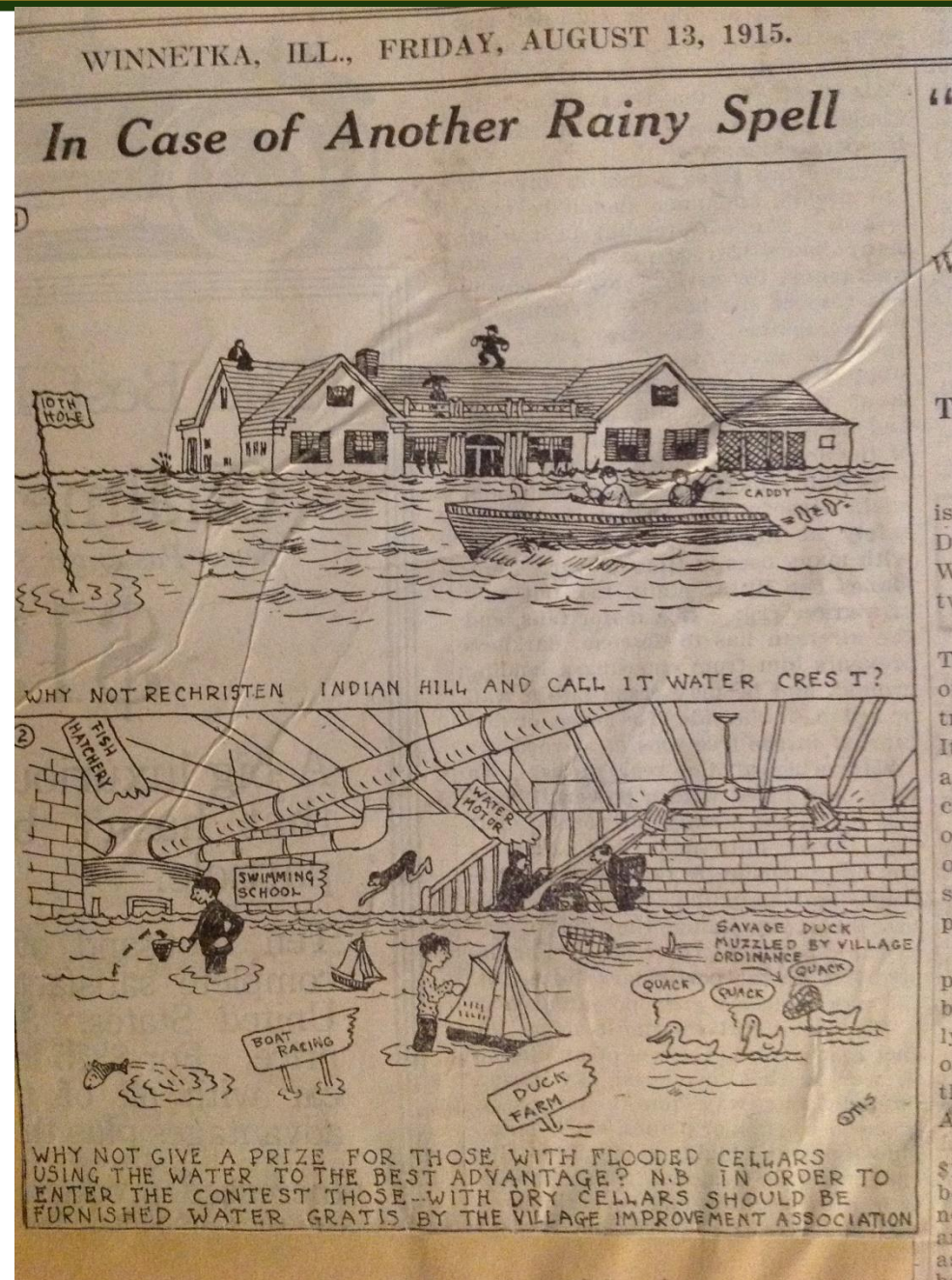




# VILLAGE OF WINNETKA

## STORMWATER MANAGEMENT ON SKOKIE PLAYFIELDS







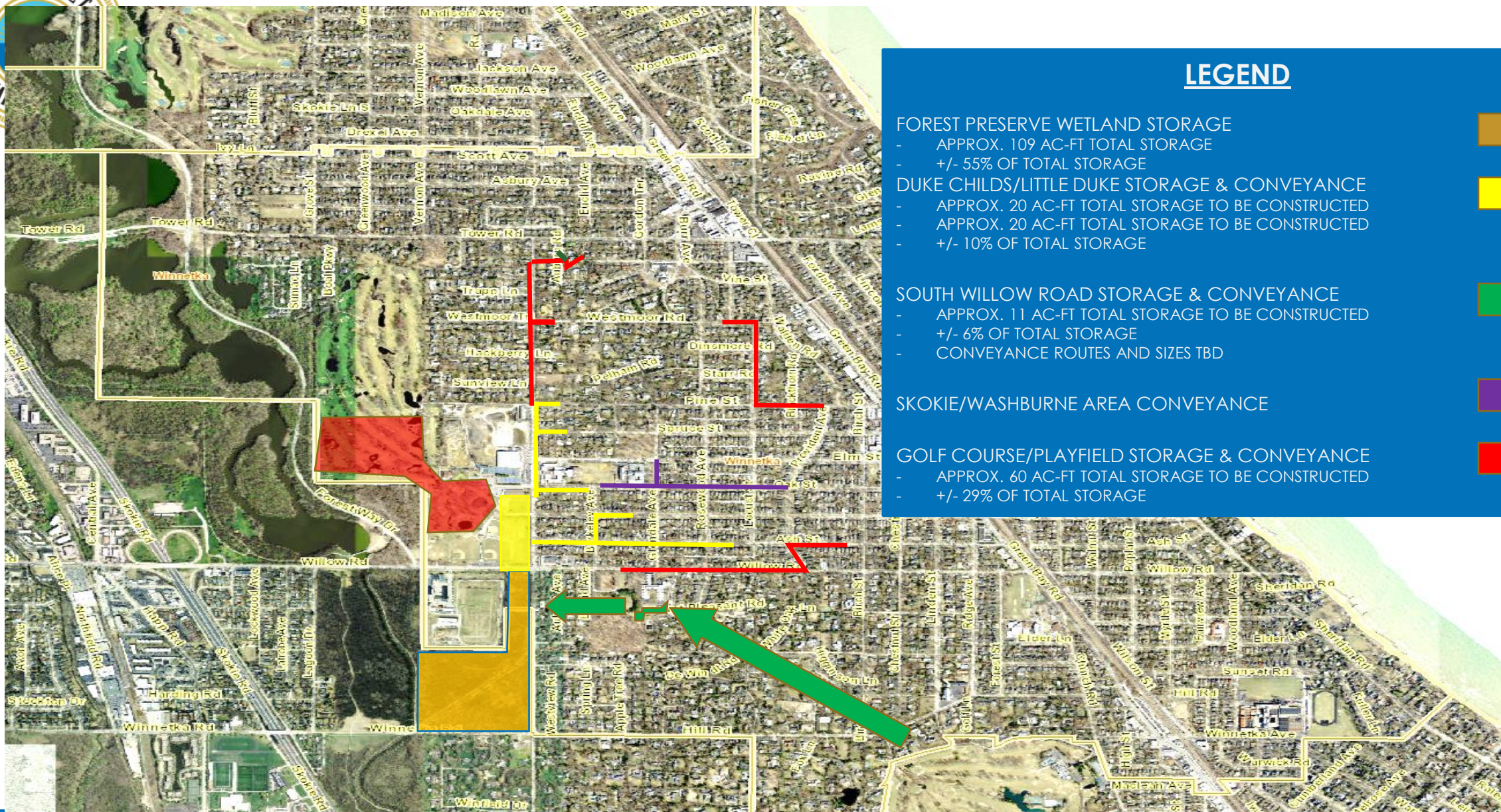
# STORMWATER VISION PROCESS







# STORMWATER VISION



## LEGEND

### FOREST PRESERVE WETLAND STORAGE

- APPROX. 109 AC-FT TOTAL STORAGE
- +/- 55% OF TOTAL STORAGE

### DUKE CHILDS/LITTLE DUKE STORAGE & CONVEYANCE

- APPROX. 20 AC-FT TOTAL STORAGE TO BE CONSTRUCTED
- APPROX. 20 AC-FT TOTAL STORAGE TO BE CONSTRUCTED
- +/- 10% OF TOTAL STORAGE

### SOUTH WILLOW ROAD STORAGE & CONVEYANCE

- APPROX. 11 AC-FT TOTAL STORAGE TO BE CONSTRUCTED
- +/- 6% OF TOTAL STORAGE
- CONVEYANCE ROUTES AND SIZES TBD

### SKOKIE/WASHBURNE AREA CONVEYANCE

### GOLF COURSE/PLAYFIELD STORAGE & CONVEYANCE

- APPROX. 60 AC-FT TOTAL STORAGE TO BE CONSTRUCTED
- +/- 29% OF TOTAL STORAGE





# COOK COUNTY MEMORANDUM OF UNDERSTANDING





# COOK COUNTY PROJECT DESCRIPTION

- Construct 74+/- acre-feet of stormwater storage (109 acre-feet overall) on 49-acre parcel
- Includes open-water, wetland, and sedge meadow areas
- Includes water-quality improvement measures and monitoring program
- Cooperatively conceived with Open Lands, Friends of the Forest Preserves, and the North Branch Stewards
- Village to maintain improvements





# PROJECT LAYOUT

7





## MEMORANDUM OF UNDERSTANDING KEY POINTS

- Construction of ~74 acre-feet of wetland stormwater storage
- Total storage on property ~109 acre-feet, including passive storage
- Runoff from 0.5-inch rain must be captured and treated before water can be discharged to Forest Preserve
- Require commitments to complete additional upstream storage projects on available open spaces







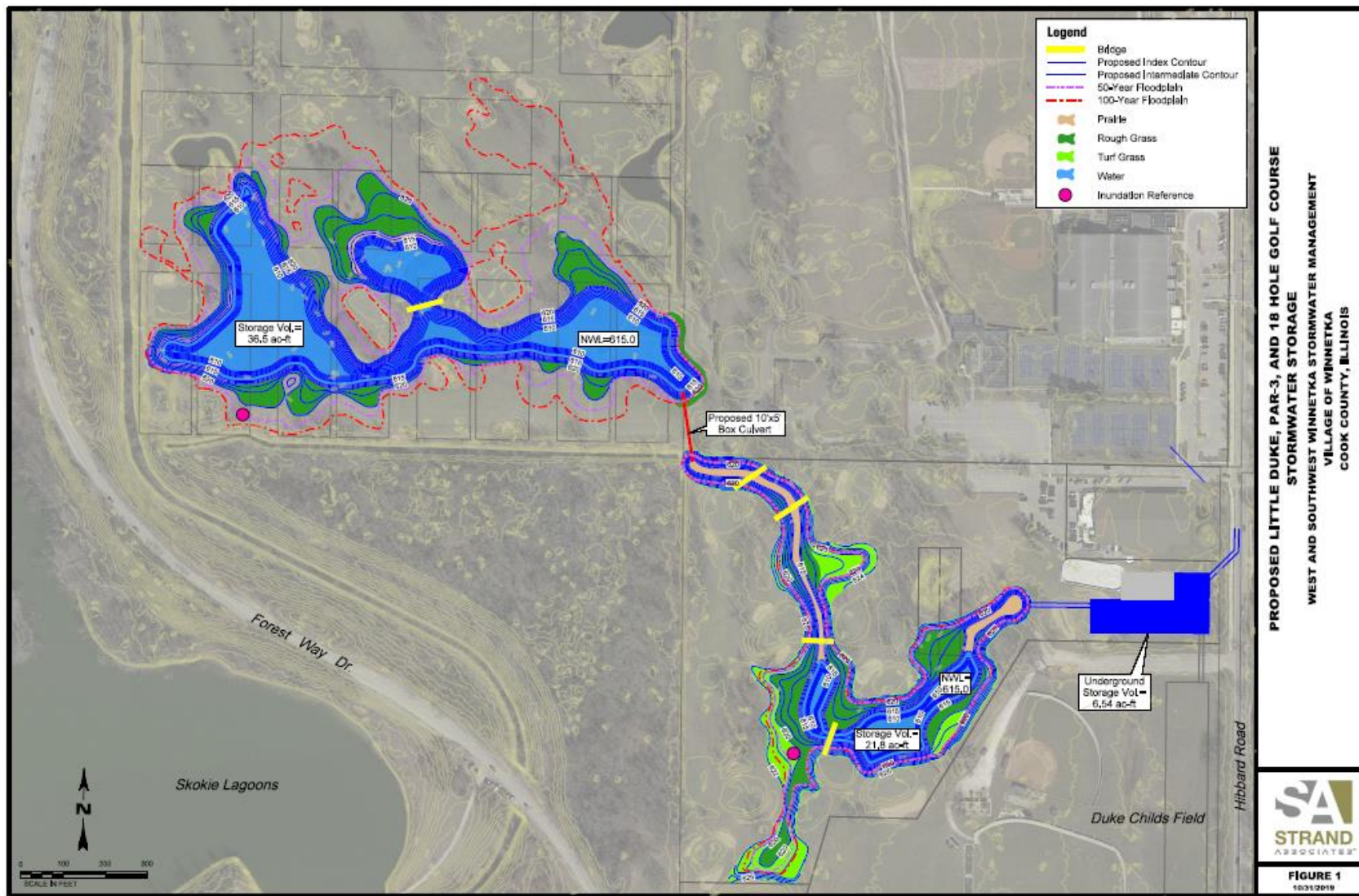
# SKOKIE PLAYFIELD STORMWATER STORAGE IMPROVEMENT





# CURRENT LAYOUT – STORMWATER IMPROVEMENT

10











## NEW WATER FEATURE



- **Adjacent to holes 15, 16, 17, 18**
- **Provides stormwater storage**
- **Provides additional source of irrigation water to reduce irrigation expenses**
- **Increases visual and playability appeal**



# 18-HOLE COURSE IMPROVEMENTS

13

**Regraded fairways to improve water runoff characteristics and increase playability**



**AFTER**  
ENHANCED SURFACE SLOPE PROVIDES  
ADEQUATE SURFACE DRAINAGE TO  
PROPOSED DRAINAGE INLETS



**BEFORE**  
LACK OF EXISTING FAIRWAY SLOPE DOES NOT  
ALLOW SURFACE DRAINAGE FLOW TO  
EXISTING DRAINAGE INLETS

